

# THE MESSENGER

August 2022

The newsletter of Christ Evangelical Lutheran Church

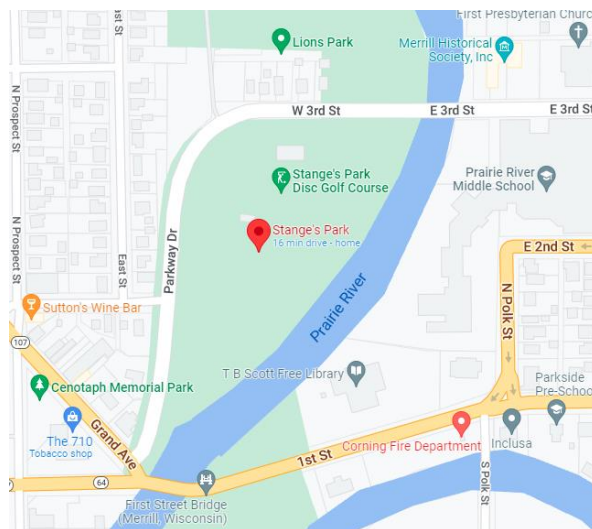
## Church Picnic

Sunday, August 14

**10:30 Worship Service at Stange's Park followed by a picnic.**

E 3<sup>rd</sup> Street is  
under  
construction;

use Parkway Drive  
and W 3<sup>rd</sup> Street  
to get to the park.



Stange's Park, 209 W 3rd St, Merrill

Chicken will be provided; please bring a dish to pass.

Handicap accessible shelter includes bathrooms. Stange's Park has a swing set, playground equipment and Frisbee golf course.

*Note: The Sunday, August 14 worship service will not be livestreamed; instead, the Monday evening service on August 15 will be.*

### In this Messenger:

- 1) Church Picnic
- 2) Pastor's Devotion
- 3) Calendar
- 4) Bible Studies
- 4) P-16 Tuition Assistance
- 4) Called Worker Fund
- 4) *Meditations*
- 4) Worship Service Ushers & Offering Help, Seating
- 4) Birthdays
- 4) College-bound
- 5) *A God-Lived Life* Stewardship Challenge
- 5) NLHS Delegates
- 5) Worship Services Online & On Air
- 5) Online Church Resources
- 6) Softball Pictures
- 7) Youth Rally Pictures
- 7) WELS Events
- 7) *Forward in Christ*
- 8) VBS Pictures



715-536-3313  
www.christmerrill.com  
www.facebook.com/christmerrill  
1204 N. Sales Street | Merrill, WI 54452



# Shine Like Stars

*Shine like stars in the universe as you hold out the word of life. (Philippians 2:15-16)*

Just recently NASA has received new pictures from the telescope that they sent into space. Perhaps you have seen these pictures on the news, and truly those pictures are amazing. Mankind has always been fascinated with stars and everything else we see in the sky. Even **God's Word makes constant use of this concept of light and stars.** The very first day of creation has God creating light. On day four God created the sun, moon, and stars to give us light and to mark seasons, days, and years. After the sixth day of creation God declared that everything was very good.

But soon God's glorious creation became shrouded in darkness, sin, and death. Adam and Eve, the crown of God's creation, disobeyed God which resulted in condemnation for all mankind. But God still loved his creation and promised a Savior for all mankind. This promise of a Savior was handed down generation by generation, and eventually was passed down to Abraham. God promised Abraham and Sarah that they would have a child and through this child the Savior would eventually be born. But there was a problem. Abraham and Sarah were old and incapable of having children. Abraham had his doubts, but God told Abraham to look up into the night sky and count all the stars. God declared to Abraham that his offspring would be as numerous as the stars in the sky. Abraham believed God and his faith was credited to him as righteousness, just in the same our faith in God is credited to us as righteousness.

When the time had fully come God sent his Son born of the virgin Mary. On that first Christmas night angels appeared to the shepherds and the glory of the Lord shone around them to tell them that their Savior had been born. Later Magi from the east were guided by a star to see their Savior and they worshiped him.

Yet once again the world became shrouded in darkness, sin, and death. While Jesus was on the cross, for three hours the sky became black as all of our sins were placed on Christ. But unlike what Adam and Eve did which resulted in condemnation for all mankind, what Christ did resulted in justification for all mankind. Although it was a dark day when Jesus died and was buried, on the third day Jesus rose victoriously from the grave at the sunrise on Easter Sunday. He ascended back into the eternal lights and glories of heaven.

From there he has sent out the Holy Spirit to enlighten us with the gospel. Scripture says, **"For God, who said, 'Let light shine out of darkness,' made his light shine in our hearts to give us the light of the knowledge of the glory of God in the face of Christ."** Having now received the light of salvation, what are we to do? We are to shine like stars. Christ called us the light of the world. We are to let our light shine so that others can see our good deeds and praise our Father in heaven and possibly be brought to faith. **Therefore let us shine like stars holding out the word of life, light, and salvation so that all people may be drawn to our God.**

- Pastor Neal Behm

# August 2022

Sunday	Monday	Tuesday	Wednesday	Thursday	Friday	Saturday
	<b>1</b> 6:30 pm Worship	<b>2</b> 4:00 pm Board of Christian Education Meeting	<b>3</b>	<b>4</b>	<b>5</b> 1:45 pm Worship @ Bell Tower	<b>6</b>
<b>7</b> 9:00 am Worship (Holy Communion)	<b>8</b> 6:30 pm Worship (Holy Communion)	<b>9</b> 6:30 pm Council Meeting	<b>10</b>	<b>11</b>	<b>12</b>	<b>13</b> 9:00 am Men's Bible Study
<b>14</b> 10:30 am Worship @ Stange's Park, followed by picnic	<b>15</b> 6:30 pm Worship	<b>16</b> 6:00 pm Board of Elders Meeting	<b>17</b>	<b>18</b>	<b>19</b>	<b>20</b>
<b>21</b> 9:00 am Worship (Holy Communion)	<b>22</b> 6:30 pm Worship (Holy Communion)	<b>23</b>	<b>24</b>	<b>25</b>	<b>26</b>	<b>27</b>
<b>28</b> 9:00 am Worship	<b>29</b> 6:30 pm Worship	<b>30</b>	<b>31</b>			

8:00 am Sundays - worship service on the radio (**96.3FM, 730AM**)

9:00 am Sundays - worship service on **Christ Ev. Lutheran Church :: Merrill, WI :: WELS** YouTube channel

### BIBLE STUDY ON YOUR SCHEDULE:

*Growing Together* is an ongoing congregational Bible study intended to provide an avenue to hold individual, family or small group study at a time that works for you. **To receive a paper copy of each week's lesson in your church mailbox, please sign up by August 7 on the hallway bulletin board.** To receive each week's lesson in your email, please or sign up at [ChristMerrill.com/email](http://ChristMerrill.com/email) and subscribe to the *Growing Together in Christ* Bible study.

**MEN'S BIBLE STUDY** will be held at 9:00 am on **Saturday, August 13** in the church basement. Neil V. is leading the study on the book of *Job*.

### P-16 TUITION ASSISTANCE

#### APPLICATIONS DUE:

The P-16 Tuition Assistance Program applications for assisting students attending WELS preschool, elementary, secondary, and college level schools are due **September 1** for the fall semester. Applications are available in the narthex to the right of the education bulletin board. Place the completed application in the Board of Christian Education mailbox.

#### P-16 TUITION ASSISTANCE FUND:

Special envelopes are on the right side of the church mailboxes for contributing to the fund.

**CALLED WORKER TUITION FUND:** The Called Worker Tuition Assistance Fund exists to provide assistance to our members that attend Martin Luther College or the seminary. Special envelopes are on the right side of the church mailboxes for contributing to the fund.

### MEDITATIONS SIGN UP:

*Meditations* is an inspiring, personal devotional booklet offering daily Scripture-based, soul-searching studies of God's Word. Each meditation is clearly written and easy to understand, with a special Scripture reading, devotion, and prayer for each day. *Meditations* provides scriptural guidance and encouragement for daily living. **If you would like to get a copy of this periodical for the next church year, please sign-up on the narthex bulletin board by September 18.**

### USHERING AND OFFERING PLATE ASSISTANCE:

Confirmed men are needed to help with ushering. Those interested may contact Dan K., Head Usher. Also, while the offering is being collected, confirmed men are encouraged to help with the passing of the offering plates in the side isles; this is done rather informally by a volunteer standing up prior to the ushers receiving the plates from Pastor. Thank you for your consideration!

**WORSHIP SERVICE SEATING:** Reserved seating is available in the back of the church for families with young children and persons with disabilities. Please keep those pews open for those who need them.

### AUGUST BIRTHDAYS



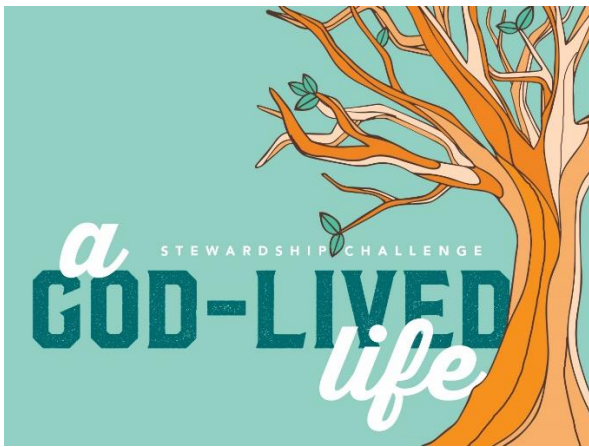
8 Jonathon D.  
10 Charlotte B.  
11 Ellen C.  
13 Colleen S.  
15 Miley G.  
20 Donna D.  
26 Jane D.

26 Sonia T.  
27 Cindy H.  
28 Brad B.  
29 Dan K.  
31 Ethan R.  
31 Danielle F.



### CALLING COLLEGE-BOUND STUDENTS!

Are you heading to college this fall? Do you know someone who is going to college? Don't leave your faith life at home! Sign up with WELS Campus Ministry to get connected with the local campus pastor near your school and to receive free copies of *Meditations* devotions and *Forward in Christ* magazine. Sign up at [wels.net/college](http://wels.net/college).



Stewardship is about more than money. *It's our whole lives.* Jesus lived his life and gave his life for us. Our loving response is to imitate that.

In the months of September through December, God's Word will be challenging us, and we'll be challenging one another to live a God-lived life. And that encompasses everything. We will be talking about a life of being a disciple, a life lived for others, a life of hospitality, and a life lived shrewdly.

Each month, we will be introduced to a challenge that we then prayerfully commit to carrying out the rest of the month. How will we commit to the challenges? As individual members, we are going to fill out a different challenge card each month. This will help to involve our entire family of faith in the challenges and help us encourage each other in the challenges. May God bless us as we grow in his Word and in our lives of living it!

**NORTHLAND LUTHERAN HIGH SCHOOL DELEGATES:** Jacob M. (delegation chairman) and Chris R. were elected as our new delegates at the July Quarterly meeting. Feel free to reach out to them if you have any questions or concerns about NLHS. A thank you goes out to Willi H. and Tom M. for their previous service.

## THE MESSENGER

**WORSHIP LIVESTREAM:** Christ Ev. Lutheran Church provides an internet livestream broadcast during many of the **Sunday services** (9:00 am). Subscribe to the YouTube channel (Christ Ev. Lutheran Church :: Merrill, WI :: WELS) to get updates about the live streaming schedule. The videos are available on the channel to watch at one's convenience.



**SERVICES ON THE AIR:** A Christ Evangelical Lutheran Church worship service is on the air **Sunday mornings at 8:00 am** on 96.3FM, 730AM, and streaming at [bluejay963.com](http://bluejay963.com), Alexa, and TuneIn (for mobile streaming).



## EASY ACCESS TO ONLINE CHURCH RESOURCES:

Visit [christmerrill.com](http://christmerrill.com) and click on the Facebook icon to go to the church's public Facebook page; click on the YouTube icon to visit the church's channel and view previously recorded worship services. Both icons are in the upper right corner of the page.



BELIEFS NEWS ONLINE GIVING EMAIL SIGN-UP



Members are encouraged to share the weekly Facebook worship service posts with their friends.

Please submit items for next month's Messenger by the 20<sup>th</sup> of this month to [Messenger@ChristMerrill.com](mailto:Messenger@ChristMerrill.com) or place them in the Messenger slot located in the top row of church mailboxes in the narthex.



## Church Softball

Christ Lutheran combined with Mountain of the Lord (Rib Mountain) and Trinity (Berlin) to form a team.

June 5 was "Team Tommy" Day at the ballpark with teammates wearing orange and signaling "T" for Tommy.



Jerome



Michael



Leon, Michael



Leon

Eight members of our church played in games this season.



Ethan



Losha



Jerome



Katelyn



Leon



Brenda took many pictures during the games.



Katelyn



Derek



Scott



Adeline H. and Megan C. recently attended the WELS International Youth Rally.



## Upcoming WELS Events

September 30 – October 2	Women's Retreat @ Camp Phillip	<a href="http://www.campphillip.com/">www.campphillip.com/</a>
October 21-23	Fall Teen Retreat @ Camp Phillip	<a href="http://www.campphillip.com/">www.campphillip.com/</a>
January 16-18, 2023	WELS National Conference on Lutheran Leadership Chicago, Illinois <a href="http://lutheranleadership.com">lutheranleadership.com</a> Open to men and women. Registration opening soon.	

**FORWARD IN CHRIST:** *Forward in Christ* (FIC) is the official magazine of the Wisconsin Evangelical Lutheran Synod. Published monthly in both print and digital formats (<https://forwardinchrist.net>), FIC brings Lutherans together through shared stories of faith and articles that address important issues facing Christians today. FIC also provides an in-depth look at important biblical truths while striving to inspire its readers to live lives of Christian service. As WELS' official magazine, FIC shares news from its congregations, schools, ministry affiliates, and synodical areas of ministry. **Print copies are available in the narthex.**

# Vacation Bible School – Road Trip 3:16

